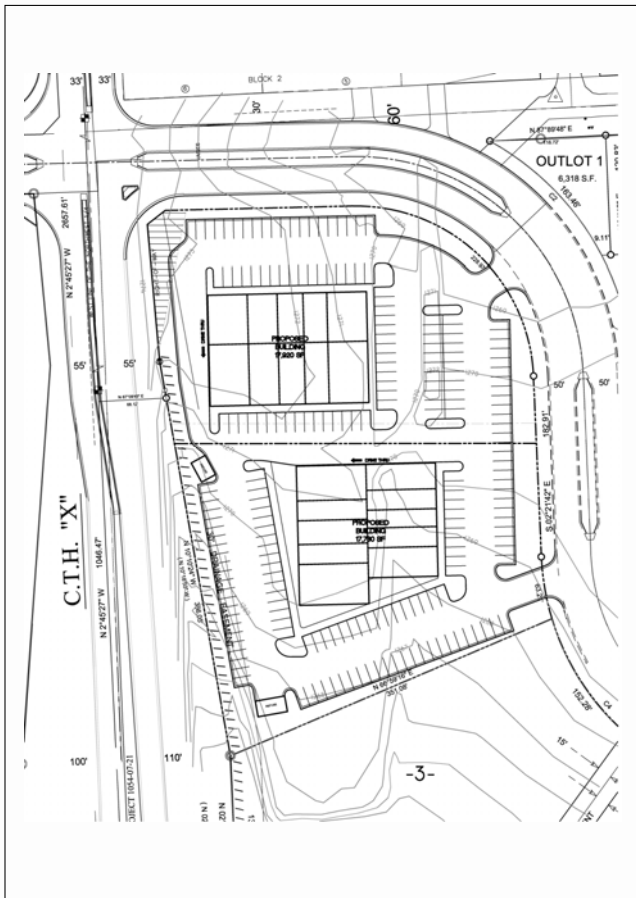




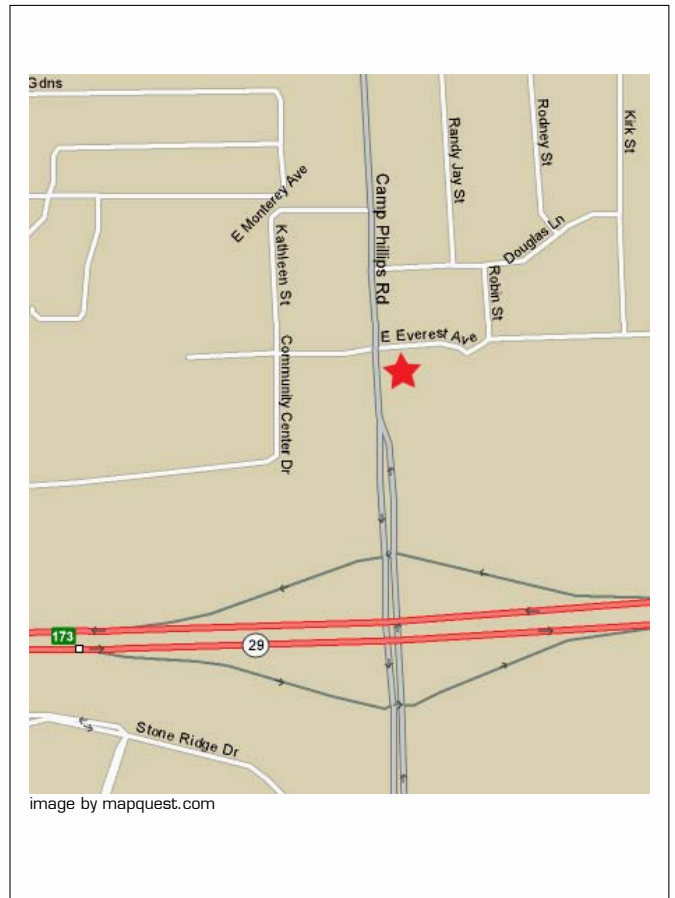
**Location:** 4103 Barbican Ave, Weston WI, 54476  
**Available Space:** 1260 to 5000 sq. ft. rentable  
**Demographics:**  
**Traffic Counts:**  
 Camp Phillips: 14,700  
 Hwy 29: 25,000

**Population:**  
 Village of Weston: 13,195  
 All adjoining communities: 66,796  
**Additional Comments:** See attached for specific layouts. Tenant responsible for their own buildouts.

Site Map:



Map:



This document has been prepared solely for information purposes. While the information contained herein is from sources deemed reliable, it has not been independently verified. This document is provided subject to errors, omissions and changes in information.



### South Building

