

REVISIONS
CHECKED: SCOTT GROHOLSKI
DRAWN: TRAVIS PLANTICO
DATE: 7-10-06
PROJECT NO. 06.517

PROJECT MANAGER:  
**J.L. FISCHER INC.**  
 Member of "THE FISCHER GROUP"  
 1008 Woodcrest Dr. • Appleton, Wisconsin 54915 • USA  
 jfischer2@new.rr.com  
 1-920-450-0023

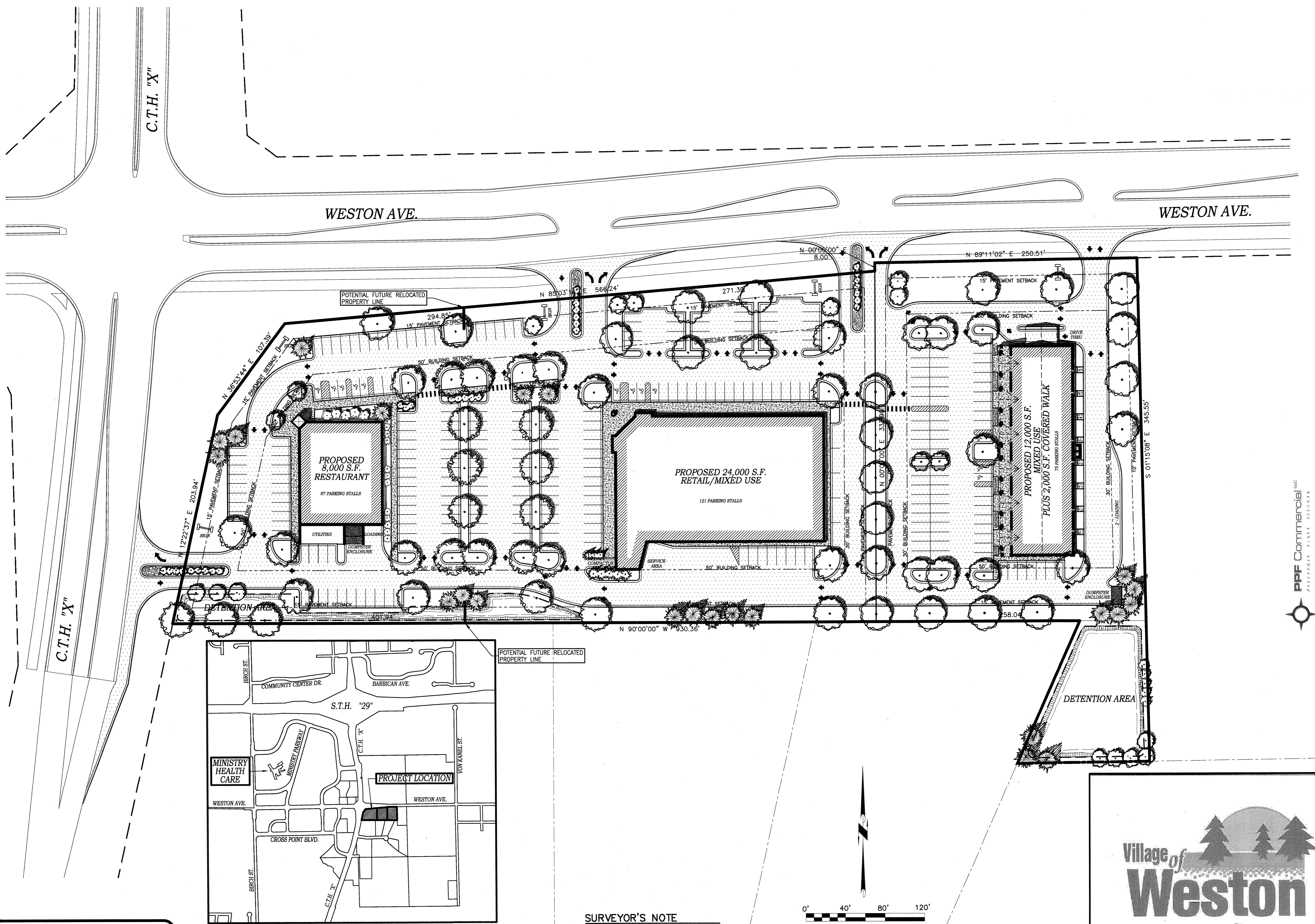
DEVELOPER:  
**PPF Commercial LLC - Weston**  
 LOT DEVELOPMENT  
 VILLAGE OF WESTON  
 MARATHON COUNTY, WISCONSIN

ARCHITECT:  
**Olson Architecture**  
 808 West Front Street  
 Appleton, Wisconsin 54914  
 1-920-202-2334

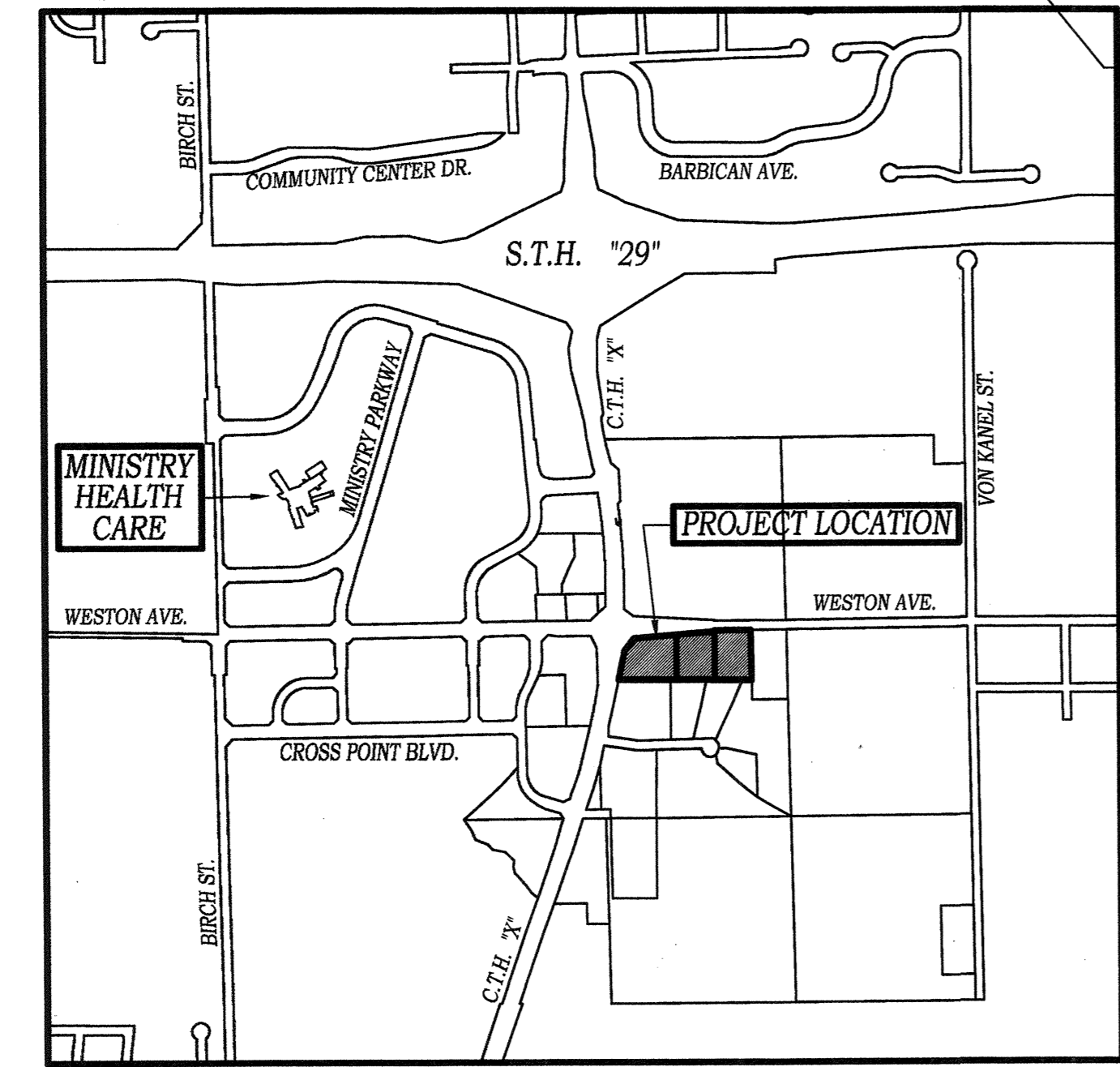
CIVIL ENGINEER:  
**FOB**  
 LAND SURVEYING  
 LANDSCAPE ARCHITECTURE  
 CIVIL ENGINEERING  
 1101 BRILLOWSKI ROAD, SUITE D  
 STEVENS POINT, WI 54481  
 (715) 344-9999

CONCEPTUAL PLAN - 2  
 P.P.F. Commercial LLC, © 2006

CP-2

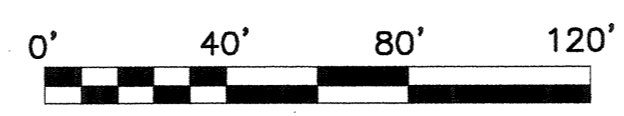


POINT OF BEGINNING, INC. HOLDS THE RIGHTS TO COPYRIGHT IN AND TO THESE PRINTS, DRAWINGS AND DOCUMENTS. NO REPRODUCTION, COPYING, ALTERATION, MODIFICATION, USAGE, INCORPORATION INTO OTHER DOCUMENTS OR ASSIGNMENT OF THE SAME MAY OCCUR WITHOUT THE PRIOR WRITTEN PERMISSION OF POINT OF BEGINNING, INC.  
 © 2006 POINT OF BEGINNING, INC.



Location Map  
**Village of Weston**

**SURVEYOR'S NOTE**  
 CONTOURS SHOWN ARE BASED ON G.I.S. FILES RECEIVED FROM THE VILLAGE OF WESTON.



Scale 1"=40'

